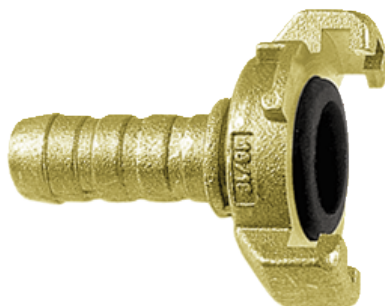


Raccordo express portagomma per tubo



Per tubo flessibile Ø int.
(mm)
7

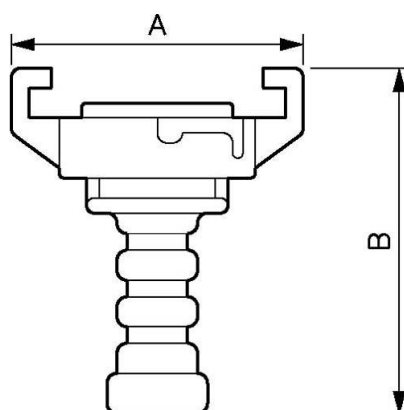
Pressione mas. di
utilizzo
10 bar

Temperatura
-5°C a +60°C

Materiale
Corpo ottone

Descrizione

Riferimento	Per tubo flessibile Ø int. (mm)
EXP 7	7
EXP 8	8
EXP 9	9
EXP 10	10
EXP 11	11
EXP 13	13
EXP 16	16
EXP 19	19
EXP 22	22
EXP 25	25



Dimensions

Riferimento	A mm	B mm
EXP 7	57	69
EXP 8	57	69
EXP 9	57	69
EXP 10	57	69
EXP 11	57	69
EXP 13	57	69
EXP 16	57	69
EXP 19	57	69
EXP 22	57	69
EXP 25	57	69